

# Dynamic Layers and Queries in Marushka Design – Disabling



**GEOVAP**

# CONTENTS

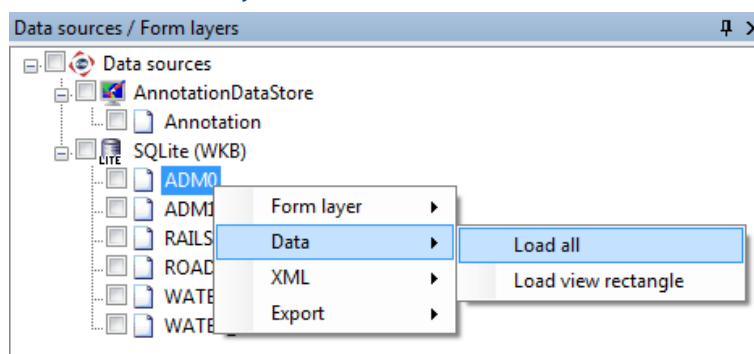
1	AIM OF THE EXAMPLE.....	2
2	WORKING WITH EXAMPLE .....	2
3	DIALOG BOX SAMPLE .....	3
4	A BRIEF DESCRIPTION OF THE EXAMPLE IN MARUSHKA DESIGN .....	4

## 1 Aim of the Example

In this example we will demonstrate how to load layers and queries according to the currently logged on user in Marushka Design. This example was created in version 4.0.3.24 and it does not have to be compatible with older versions.

## 2 Working with Example

- o Unzip the **DynamicQueries\_EN.zip** into **c:\MarushkaExamples\** folder. The target folder must be respected due to interconnection of paths with the project. In case of placing the file in the different folder, it would not be possible to work with an example.
- o In Marushka Design environment open the project **DynamicQueries\_CZ.xml**.
- o Select form layer **ADMO**, in context menu choose Data – Load all::



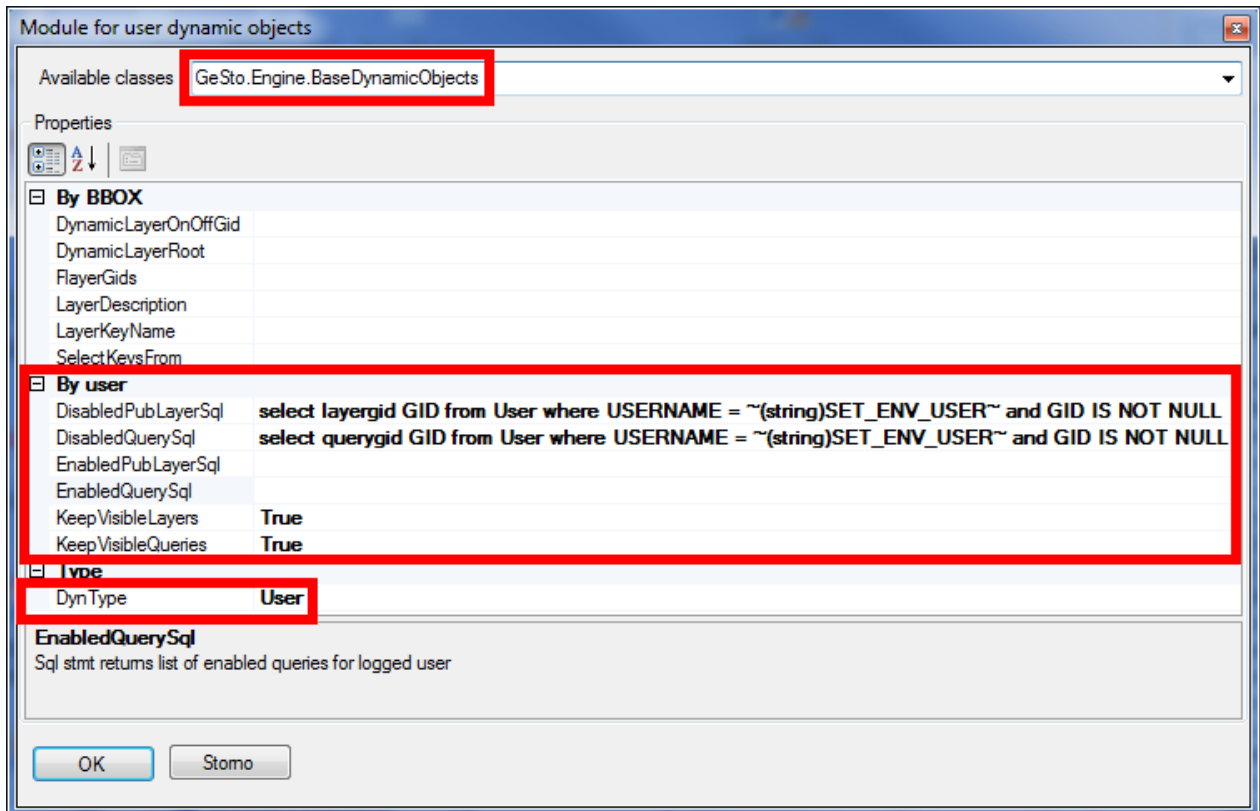
- o In map window choose „Fit all“:



- o Launch the local web server:



### 3 Dialog Box Sample



Img 1: Module allowing defining queries, which will allow or restrict selected queries or layers

Tab 1: Definition of table User for this sample project

RecNo	id	username	querygid	layergid
Click here to define a filter				
1	1	geovap	A3E12ED9	(null)
2	2	geovap	C329C1C9	(null)
3	3	geovap	E232BA83	(null)
4	7	geovap	(null)	E7E2A95D
5	8	geovap	(null)	D400E3AA

## 4 A Brief Description of the Example in Marushka Design

This sample project shows how it is possible in Marushka Design to set, so that the different users logged on in the same project will have available different layers and queries. It is mainly used to ensure, that the project manager have to manage only one project and so he does not have to create a new project for each group of users.

Disabling and enabling of queries and layers is controlled by the module, which is activated in the properties of the data store SQLite, in category: **3. Connection parameters**, attribute **DynamicObjectModule**. After clicking will be opened a module dialogue box, in the top of the window choose **GeSto.Engine.BaseDynamicObject**, which is the name of the module.

This module can be used, if the project administrator wants different users to view different layers and different queries. Module dialogue box is displayed in the Fig 1.

In module dialogue box, it is necessary to set firstly, the already mentioned **GeSto.Engine.BaseDynamicObjects** in the top. In category **Type**, it is necessary to set attribute **DynType** to value **User**. In category **User** are created queries for enabling or disabling of selected Gids from the table. Category **By BBOX** will not be used in this example, so do not enter any values here.

Attention! It is essential to correctly set individual selects. Otherwise, the project will not start and will report an error. It is also needed, if in category **By user** are not completed all the fields, so that the unused fields are cleared.

**DisabledPubLayerSql** – allows the user to disable displaying of the given publish layers for a given user name. The query is defined in the following format:

```
select layergid GID from User where USERNAME = ~(string)SET_ENV_USER~ GID
and IS NOT NULL
```

The value **LayerGid** is name of the column in the table, in which are listed Gids of the publish layers, that should not be displayed. The value **User** specifies the name of the table that stores these values. Therefore, the user must modify just those two values.

**DisableQuerySql** – works like the previous one, with the difference, that it can disable displaying of the given queries to a specific user.

```
select querygid GID from User where USERNAME = ~(string)SET_ENV_USER~ and
GID IS NOT NULL
```

The value **QueryGid** shows the name of the column in the table, in which are listed Gids for a given user, which should not display for the given user. The value **user** defines name of the table with those values.

For this pair of queries (or for their other combination), it is necessary to have table in in the database, see e.g. Tab 1. Here are listed pairs **username – querygid** or **username – layergid**. Simply put it is therefore necessary to enumerate all layers (queries), that we want to ban for the given user.

The second pair of queries **EnabledPubLayerQql** and **EnabledQuerySql**, where in the table are listed just these queries (layers), which should be displayed. Other queries (layers) are not displayed in the project. Queries are identical as their clones above, but in a result they have opposite functionality.

Item **KeepVisibleLayers** is used to ensure that in Marushka are visible all the publish layers, which has set item **Visible** to value **'True'**. This means, that all the users, which pass through authorization will have Visible all these layers + the layers which are defined using queries in module. Layers, which will the administrator allow to just only some Users, need to have set **'Visible** to **'False'**.

Attention, it is necessary, so that in the table with Users and Layers is not in columns **LayerGid** or **QueryGid** value **'Null'**, because Marushka won't start and it would encounter an error. Therefore, it is necessary to add into the query string: **GID IS NOT NULL** or it is possible to create separate tables for **LayerGid** and **QueryGid**.

Yet it is obviously necessary to set authorization settings in the **web.config** file, the default web.config is included in the example. However, it is necessary to change paths, because this web.config will work only for version 4.0.3.24 and only if it is installed in the Program Files directory.

In the project, there is set for publish layers **ADMINISTRATIVE\_BORDERS, RAILS, ROADS, WATER\_AREAS, WATER\_LINES**, that will be visible for both users (**mike, geovap**). This was achieved by the fact that these layers has set in category 2. Marushka HTML publish properties item **Visible** to value **True**.

Using queries in module are for user geovap restricted layers **RAILS, ROADS** and queries **Geovap ~ Informace, Geovap ~ Lokalizace** and **Geovap ~ Update Query**.